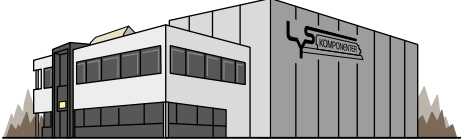


LED strip

SLC
Developed by
The Light Group



Drill 	Soldering iron 	Profile 	Cover 	LED-strip
Measuring tape 	Scissors 			Cables
Tape 	Screws (1x per 30cm profile) 			Power Control
End caps x2 per profile 	Cutting Kit (IP67) 			Driver



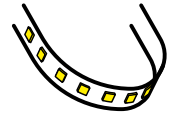
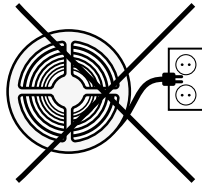
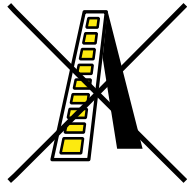
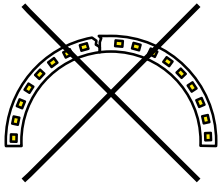
NO: Må installeres av godkjent installatør
EN: Only to be installed by an authorized electrician
DE: Nur von einer autorisierten Elektrofachkraft installieren lassen
FI: Asenna vain valtuutettu sähköasentaja
FR: Seulement pour être installé par un électricien autorisé
IS: Aðeins skal setja upp af viðurkenndum rafvirkni
ES: Solo para ser instalado por un electricista autorizado.
IT: Solo per essere installato da un elettricista autorizzato



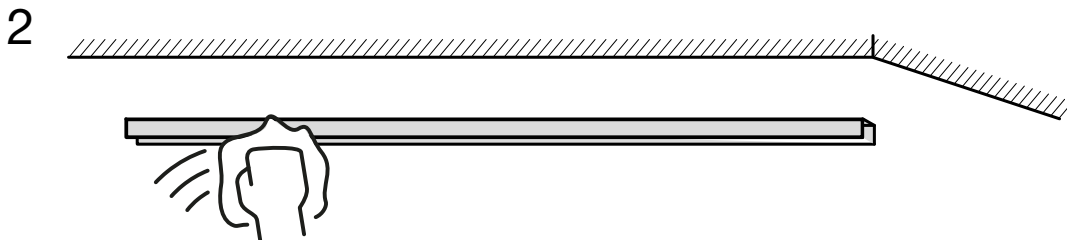
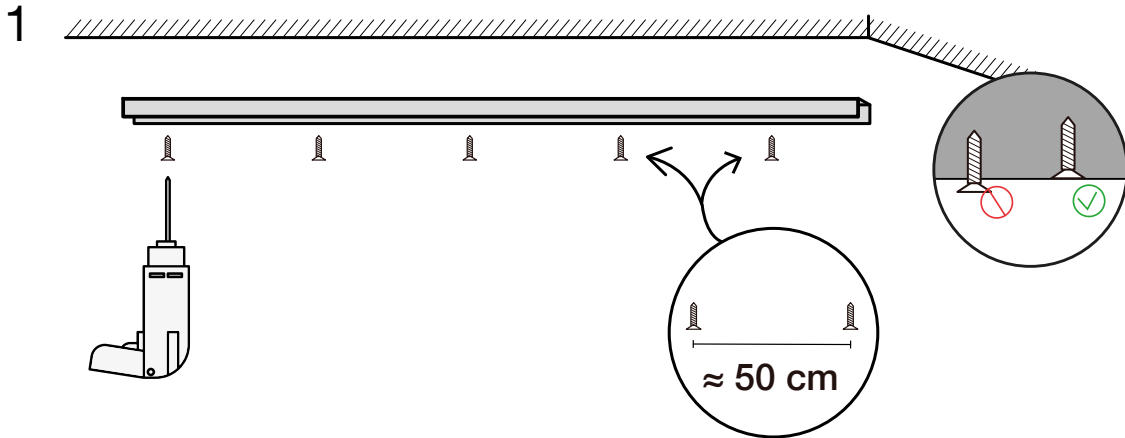
NO: Slå av strømmen før montering
EN: Power off before installing
DE: Schalten Sie vor der Installation die Stromversorgung aus
FI: Katkaise virta ennen asennusta
FR: Couper le courant avant d'installer
IS: Slökktu á orku áður en þú setur upp
ES: Apague la alimentación antes de instalar
IT: Spegnerne l'alimentazione prima di installare



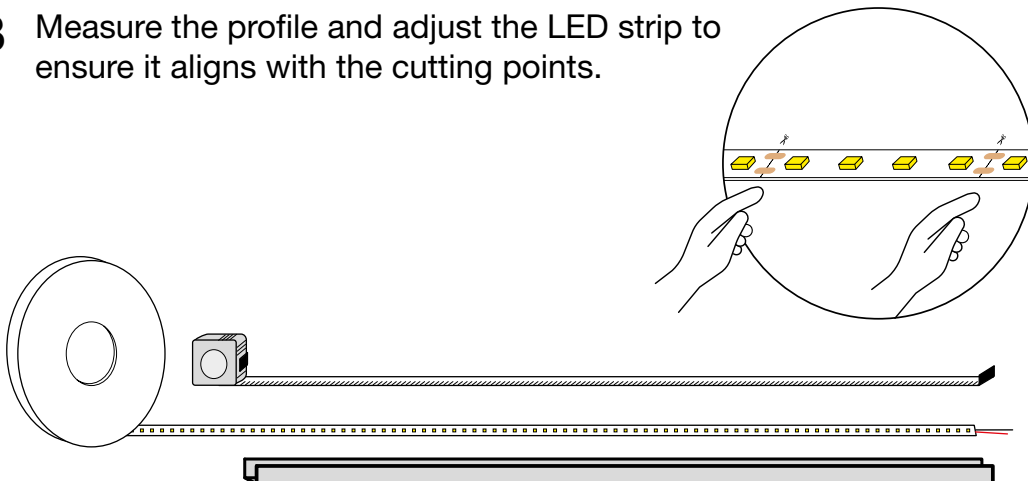
Management, Operation and Maintenance

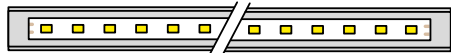
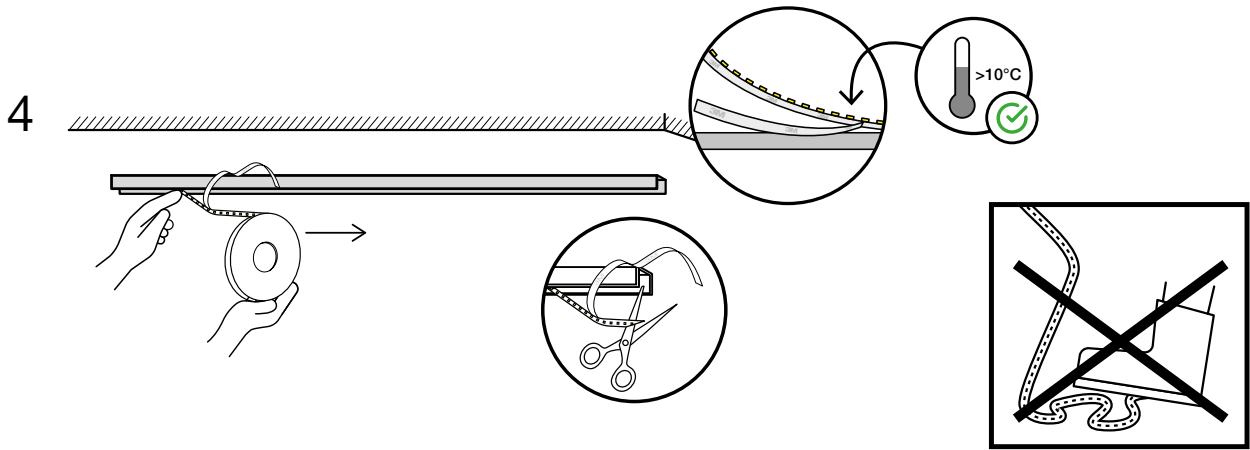


R: >20mm

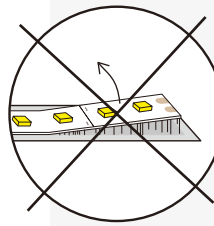


3 Measure the profile and adjust the LED strip to ensure it aligns with the cutting points.



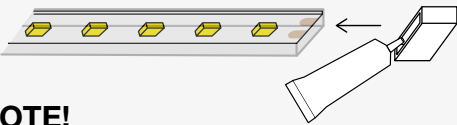


Place the LED strip in the centre of the profile to ensure even light distribution.

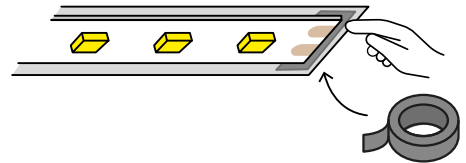


NOTE:
LED strips that have adhered to the profile cannot be removed. Attempting to do so may damage the LED strip.

IP>55

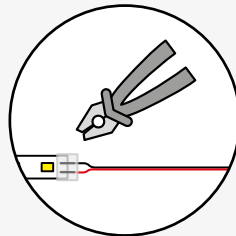
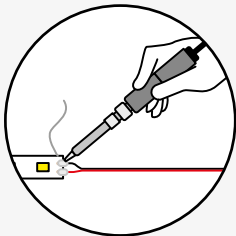


NOTE!
you must use our cutting kits, as our silicone glue has the correct properties for our LED strips.

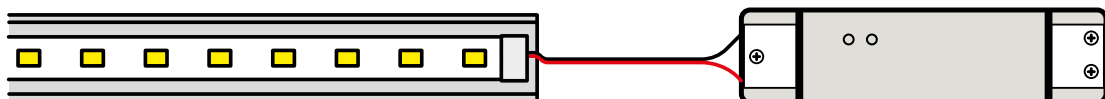


Place a piece of tape on the cut end to prevent short-circuiting against the profile.

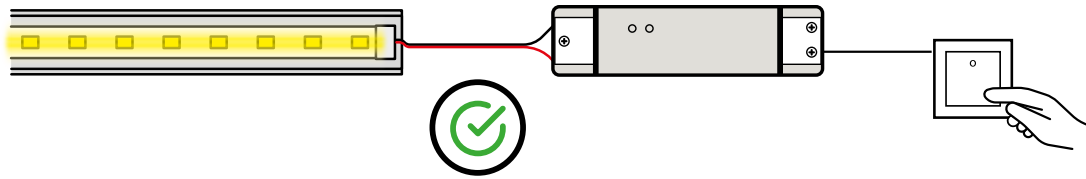
5 Connect the driver.



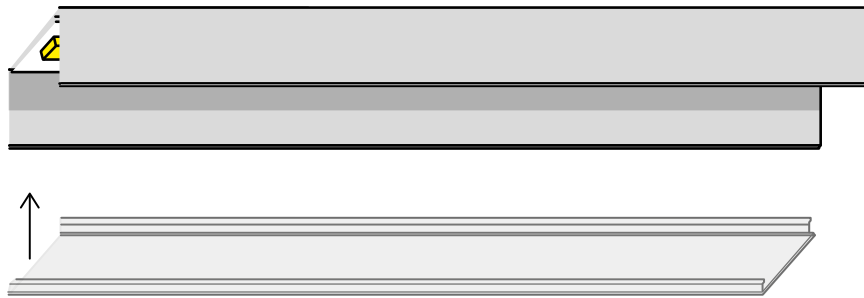
Solder or clip the wires if needed.



6 Always test the LED strips to make sure everything went as planned.



7



8

